



## FOR SALE/TO LET

2 THE LEVELS, RUGELEY. WS15 1RD

- Refurbished Trade Counter Property with offices
- 4,228 sq ft over 2 floors
- Established Commercial Location
- Lease from 3 years

**£295,000 or £19,500 per annum**

## Location

Located on the established Levels Industrial Estate, the property is easily accessed off Brereton Road via Coalpit Lane, then on to Brick Kiln Way, Rugeley. Postcode WS15 1RD.

## Description

A detached two-storey trade counter unit comprising: -

Ground Floor	2134 sq ft
First Floor	2,094 sq ft
<b>Total:</b>	<b>4,288 sq ft</b>

Parking / Yard Area to fore  
Floor areas are approximate.

The unit has undergone some refurbishment by the current owners comprising modernized offices and reception and new roof. Electric roller shutter to front.

## Price/Rent

£295,000 freehold or £19,500 per annum available on a Full Repairing & Insuring lease from 3 years.

## Rates

Current RV: £19,000 (August 2023)

## EPC

Rating D

## Legal Costs

Each party to bear their own.

## VAT

All figures exclude VAT.

## Viewing

By prior appointment with the sole agents:

**Jayman Commercial**

**t: 01543 417559**



**Ben Greaves 07753 771273**

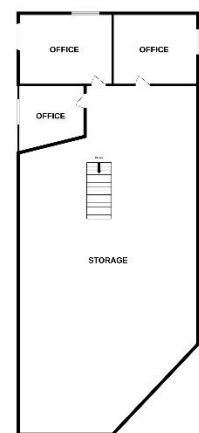
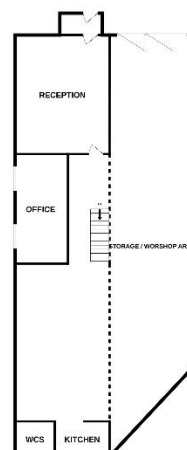
**[ben.greaves@jayman.co.uk](mailto:ben.greaves@jayman.co.uk)**

**Subject To Contract. January 2026**



GROUND FLOOR

FIRST FLOOR



STORAGE/WORKSHOP WITH OFFICES

THESE PARTICULARS SET OUT A GENERAL OUTLINE FOR THE GUIDANCE OF INTENDING PURCHASERS OR LESSORS, AND DO NOT CONSTITUTE, NOR CONSTITUTE PART OF, AN OFFER OR CONTRACT. (2) ALL DESCRIPTIONS, DIMENSIONS, REFERENCES TO CONDITIONS AND NECESSARY PERMISSIONS FOR USE AND OCCUPATION AND OTHER DETAILS ARE GIVEN IN GOOD FAITH AND ARE BELIEVED TO BE CORRECT BUT ANY INTENDING PURCHASERS OR TENANTS SHOULD NOT RELY ON THEM AS STATEMENTS OR REPRESENTATIONS OF FACT BUT MUST SATISFY THEMSELVES BY INSPECTION OR OTHERWISE AS TO THE CORRECTNESS OF EACH OF THEM. (3) NO EMPLOYEE OF JAYMAN COMMERCIAL HAS ANY AUTHORITY TO MAKE OR GIVE REPRESENTATION OR WARRANTY WHATSOEVER IN RELATION TO THIS PROPERTY. AS FAR AS POSSIBLE THESE PARTICULARS ARE INTENDED TO GIVE A FAIR DESCRIPTION OF THE PROPERTY. UNLESS OTHERWISE STATED, NO ENQUIRIES HAVE BEEN MADE OF STATUTORY AUTHORITIES NOR TESTS MADE OF ELECTRICITY, PLUMBING OR OTHER SERVICES INSTALLED IN THE PROPERTY. NO WARRANTIES OR CERTIFICATES OF BUILDING WORK, LEASES/TITLE DOCUMENTS HAVE BEEN INSPECTED. SUCH INFORMATION AS IS GIVEN IN THESE PARTICULARS IS BASED ON A PURELY VISUAL INSPECTION ONLY AND INFORMATION SUPPLIED TO US BY THE VENDOR/LESSOR. INTERESTED PARTIES MUST TAKE THEIR OWN MEASUREMENTS IN ORDER TO SATISFY THEMSELVES THAT THE PREMISES ARE SUITABLE FOR THEIR REQUIREMENTS. OUR MEASUREMENTS ARE APPROXIMATE IN ORDER TO GIVE A DESCRIPTION OF SIZE ONLY. WHILST EVERY CARE HAS BEEN TAKEN TO PREPARE THESE PARTICULARS, WE WILL BE GRATEFUL IF YOU COULD INFORM US OF ANY ERRORS OR MISLEADING DESCRIPTIONS IN ORDER THAT WE MAY CORRECT THEM IN OUR RECORDS.